



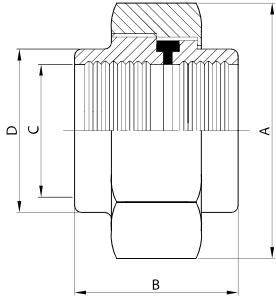
RACCORDI
UNIONS
RACCORDS
RACORES



ISS IDF

**RACCORDO MR.
EG. UNION
RACCORD DR.
RACOR MR.**

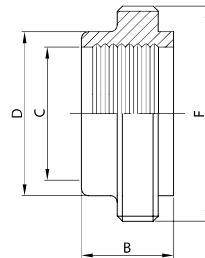
100 I



DN	A	B	C	D	gr
25	46,0	40,0	25,4	29,0	265
38	60,0	43,0	38,1	42,5	425
51	75,0	48,0	50,8	56,0	610
63	90,0	58,0	63,5	69,7	935
76	105,0	63,0	76,2	82,3	1.150
101	134,0	63,0	101,6	108,4	1.990

**BOCC. FILETTATO MR.
EG. MALE PART
NEZ FILETÉ DR.
MACHO RACOR MR.**

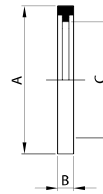
101 I



DN	B	C	D	F	gr
25	17,0	25,4	29,0	37-8	50
38	20,0	38,1	42,5	50-8	100
51	20,0	50,8	56,0	64-8	120
63	25,0	63,5	69,7	77-8	195
76	30,0	76,2	82,3	91-8	260
101	30,0	101,6	108,4	118-8	520

**GUARNIZIONE PER RACC.
SEAL RING FOR UNION
JOINT DE RACCORD
JUNTA RACOR**

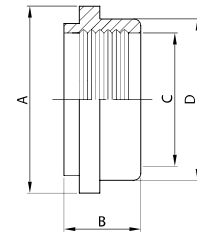
131 I



DN	A	B	C
25	32,5	7,0	23,0
38	46,0	7,0	36,0
51	59,5	7,0	49,0
63	73,0	7,0	60,7
76	86,5	7,0	73,2
101	112,5	7,0	98,0

**BOCC. LISCIO MR.
EG. LINER
DOUILLE DR.
CASQUILLO RACOR MR.**

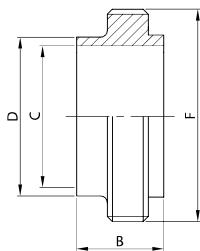
111 I



DN	A	B	C	D	gr
25	33,8	20,0	25,4	29,0	30
38	47,0	20,0	38,1	42,5	50
51	60,5	25,0	50,8	56,0	90
63	74,0	30,0	63,5	69,7	160
76	87,5	30,0	76,2	82,3	190
101	114,1	30,0	101,6	108,4	370

**BOCC. FILETTATO SR.
WG. MALE PART
NEZ FILETÉ SR. LONG
MACHO RACOR SR.**

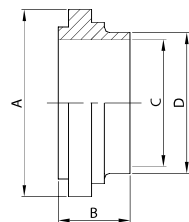
102 I



DN	B	C	D	F	gr
25	21,5	22,1	25,4	37-8	70
38	21,5	34,8	38,1	50-8	110
51	21,5	47,5	50,8	64-8	150
63	21,5	60,2	63,5	77-8	210
76	21,5	72,9	76,2	91-8	270
101	21,5	97,6	101,6	118-8	420

**BOCC. LISCIO SR.
WG. LINER
DOUILLE SR. LONGUE
CASQUILLO RACOR SR.**

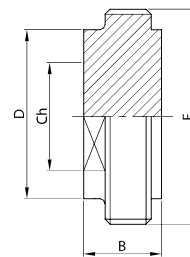
112 I



DN	A	B	C	D	gr
25	33,8	21,5	22,1	25,4	38
38	47,0	21,5	34,8	38,1	60
51	60,5	21,5	47,5	50,8	85
63	74,0	21,5	60,2	63,5	130
76	87,5	21,5	72,9	76,2	150
101	114,1	21,5	97,6	101,6	330

**TAPPO FILETTATO
BLANK MALE
OBTURATEUR FILETÉ
MACHO R. CIEGO**

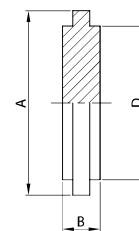
104 I



DN	B	Ch	D	F	gr
25	20,0	24,0	29,2	37-8	170
38	20,0	36,0	42,7	50-8	300
51	20,0	48,0	56,2	64-8	500
63	20,0	60,0	69,9	77-8	732
76	20,0	70,0	82,6	91-8	1.020
101	20,0	90,0	108,7	118-8	1.750

**TAPPO LISCIO
BLANK LINER
OBTURATEUR
CASQUILLO R. CIEGO**

114 I



DN	A	B	D	gr
25	33,8	10,5	29,2	60
38	47,0	10,5	42,7	130
51	60,5	10,5	56,2	220
63	74,0	10,5	69,9	330
76	87,5	10,5	82,6	350
101	114,1	10,5	108,7	830